

COMPANY PRESENTATION

Excellence is not a single act, but a habit

AGENDA

SELCO

REFERENCES



a recognized consulting company
with distinguished capabilities in supply chain and logistics management



since 1999,
helped over 200 clients
across all major industries and service sectors



to enhance their capabilities to run their supply chains
to design and align their logistics infrastructure
to guide through successful implementations



from strategy to implementation
transforming innovative solutions to a sustainable framework



with a culture based on integrity, diligent effort, and exceptional passion
serving our clients with honest and competent effort
enhancing our services with global business partners

REFERENCES

HOME APPLIANCES	FMCG / FOOD	PHARMA & COSMETICS	RETAIL	AUTOMOTIVE	ENERGY & CHEMICALS	STEEL GLASS MINING	TEXTILE & HOME PRODUCTS	LOGISTICS	SERVICES
									
									
									
									
									
									
									

SUPPLY CHAIN CONSULTANCY

Supply Chain Management
Strategic Network Design
Supply Chain Planning
Sustainability
Outsourcing

SOFTWARE CONSULTANCY

Supply Chain Planning
Transport Planning & Optimization
Simulation
Workforce optimization
Manufacturing Engineering

BUSINESS ANALYTICS

Digital transformation
Business Intelligence
Predictive Modelling
Decision Optimization
Cognitive Analytics

MATERIAL HANDLING LOGISTICS

Facility Layout Planning
Material & Workflow Analysis
Material Handling System Design
RFQ Prep & Supplier Evaluation

WAREHOUSE & DC LOGISTICS

Warehouse & DC Design
Warehouse Management Systems
Warehouse Health Check
RFQ Prep & Supplier Evaluation

SELCO is a recognized consulting company with distinguished capabilities in supply chain and logistics management. With our deep functional expertise and practical approaches, we deliver outstanding results and help our clients to enhance their capabilities to run their supply chains.

Our culture based on integrity and diligent effort, coupled with exceptional passion for delivering results enable us to retain and develop our customer base across all major industries and service sectors. Our partners around the globe with unique knowhow clusters accelerate and enhance the value of our services.

Excellence is not a single act, but a habit

SUPPLY CHAIN DESIGN

deliverables & values

sc strategy



customer service design



alignment & collaboration



sc processes

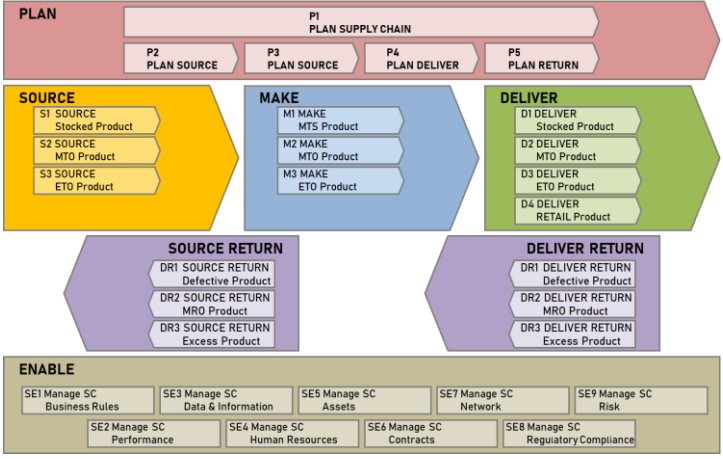
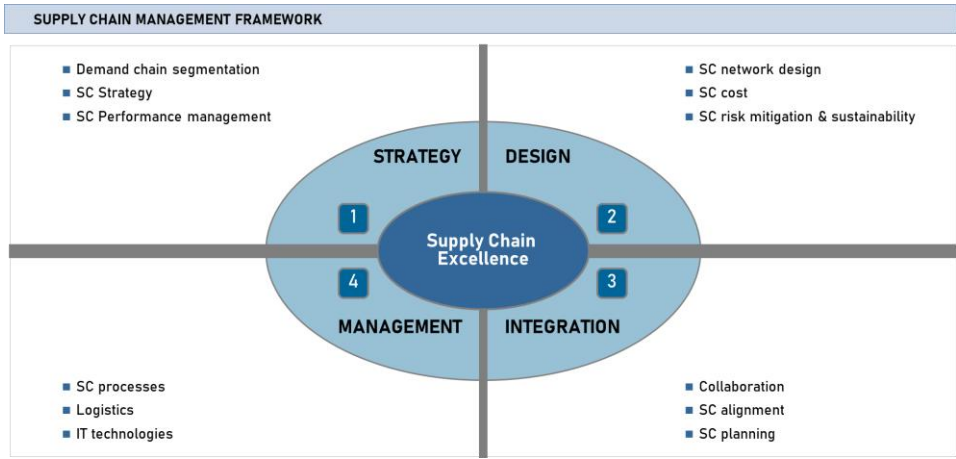


best practices



- Aligning supply chain strategies with corporate strategy
- Determining the optimal customer service design framework
- Identifying planning and integration success factors
- Designing the optimum supply chain processes
- Empowering organization with best practices for sustainability

Sustainable competitive advantage



NETWORK DESIGN

deliverables & values

factory
locationtransportation
modewarehouse
locationsPOD & POL
locationscoverage
areas

Developing the optimized logistics distribution network

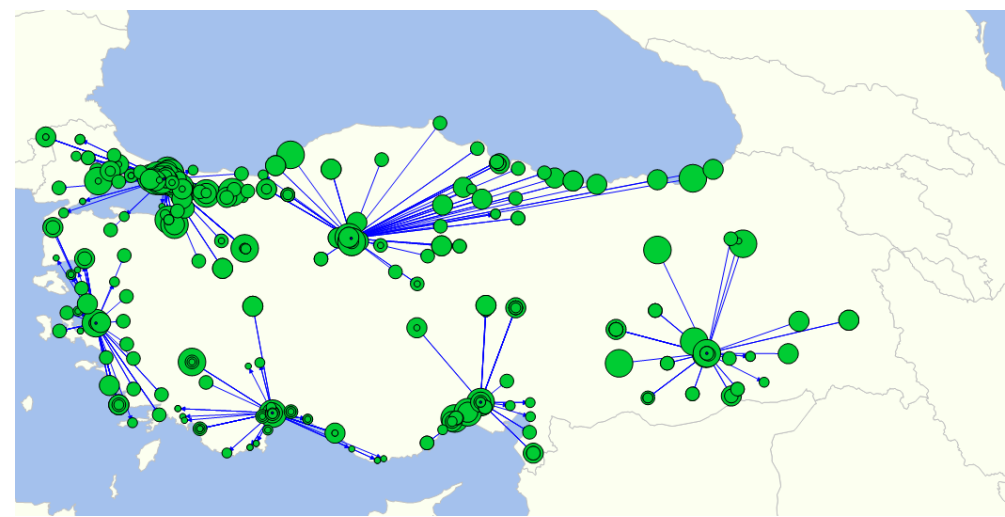
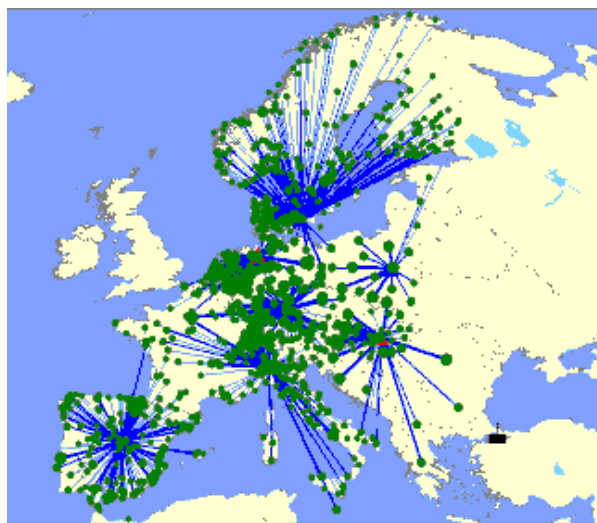
Determining the optimal locations of factories

Determining the optimal locations of distribution centers

Determining the the coverage of customer regions

Determining the transportation modes of the products

7-22 % saving on supply chain costs



ADVANCED PLANNING & OPTIMIZATION

deliverables & values

diagnostics



process design

solution design



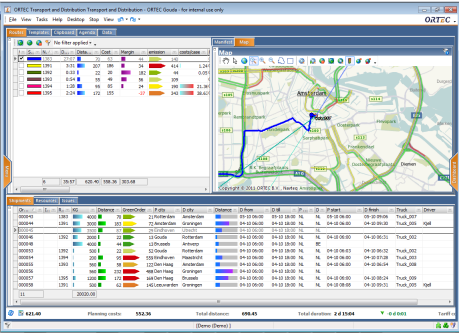
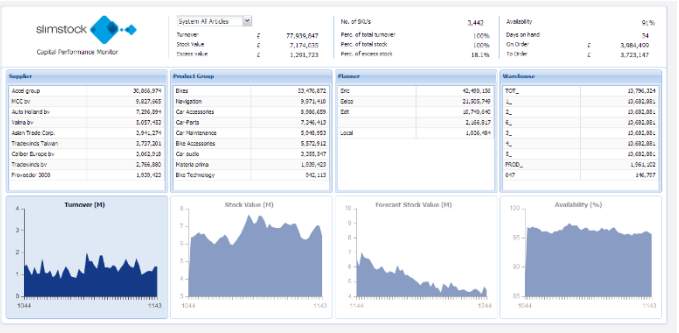
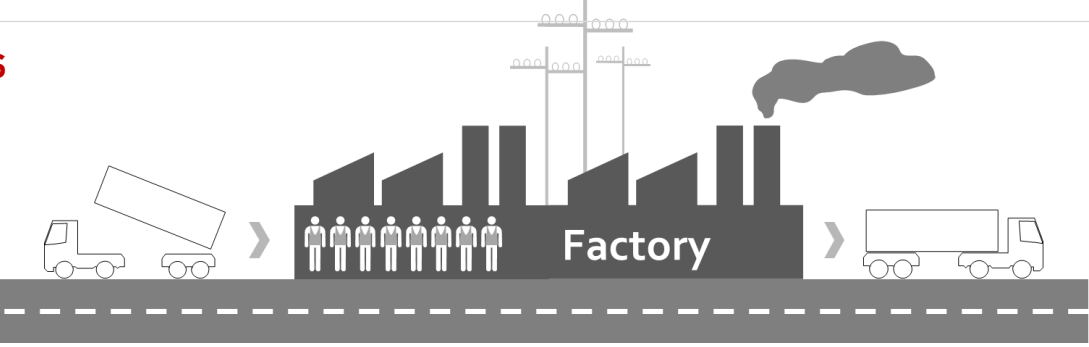
user experience

cost & service optimization



- Demand planning
- Inventory planning
- Supply planning
- Production planning
- Route planning & load optimization

reaping the hidden values



SIMULATION

deliverables & values

system
design



bottleneck
analysis



capacity
planning



throughput
increase

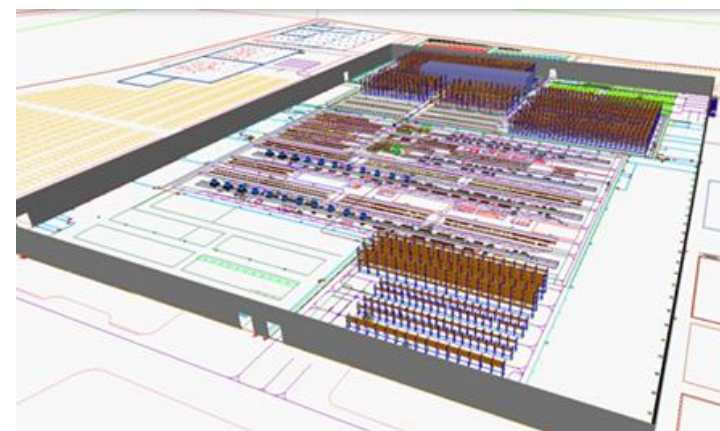
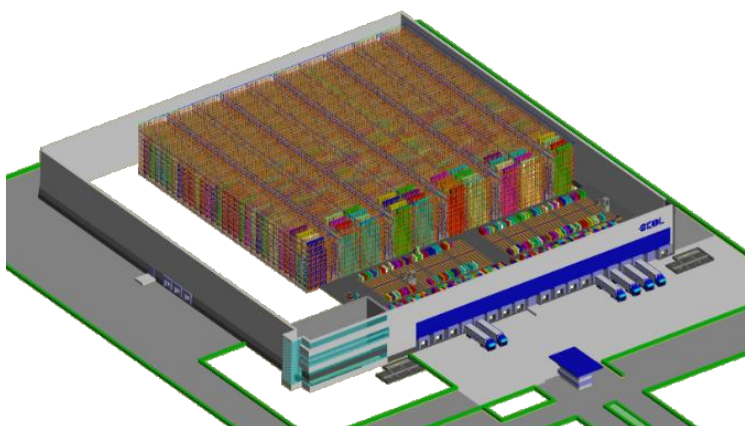


scenario
analysis



Justification of new capital expenditure
New system design
Determination of system throughput
Productivity increase, bottleneck analysis
Capacity planning

seeing into the future



FACILITY DESIGN

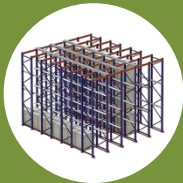
deliverables & values

conceptual
layout
design



material flow
design

storage
system design



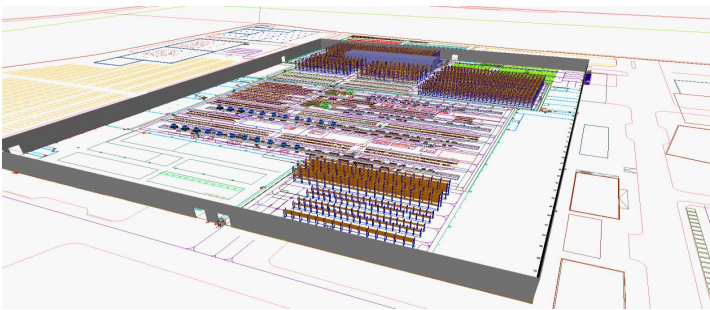
material
handling design

facility
design



- Facility Layout Planning
- Material & Workflow Analysis
- Material Handling System Design
- RFQ Preparation
- Supplier Evaluation

optimal efficiency



KEY SERVICES

WAREHOUSE DESIGN

deliverables & values

conceptual design



flow analysis



storage equipment design



material handling design

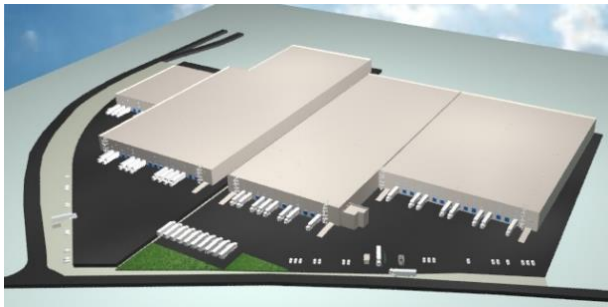
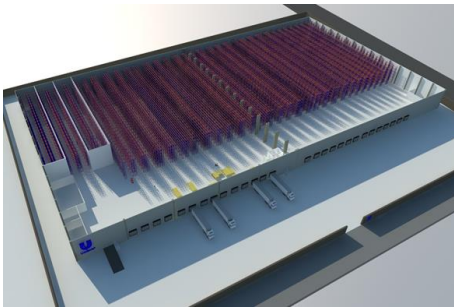


wms design



Warehouse & DC design
Warehouse process improvement
Material and workflow analysis
Material handling system design

optimum customer service



ASCM

About ASCM

The Association for Supply Chain Management (ASCM) is the global leader in supply chain organizational transformation, innovation and leadership. As the largest non-profit association for supply chain, ASCM is an unbiased partner, connecting companies around the world to the newest thought leadership on all aspects of supply chain.



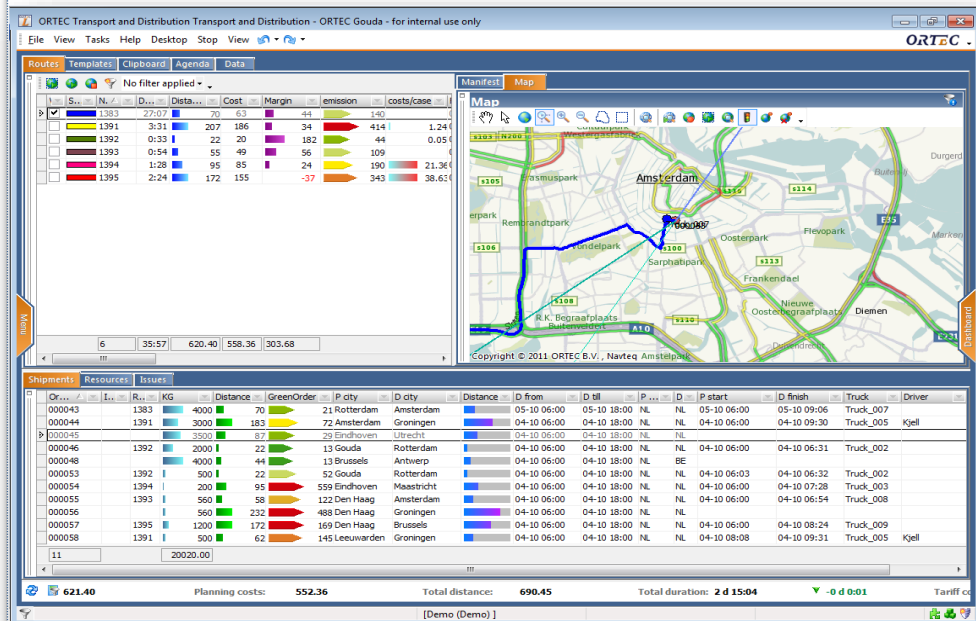
Corporate Solutions

With ASCM's wide-ranging programs and services, we help organizations achieve new levels of success by supplying the standards, tools and resources they need to recognize weaknesses, implement measurable tactics, and optimize teams to lead the marketplace of tomorrow.

Corporate Solutions		
Overview	Sustainability Solutions	Case Studies
Talent Solutions	Enterprise Certification for Sustainability	
Transformation Solutions	Standards and Tools	
Manage Disruption	SCOR Digital Standard	
Operationalize Sustainability	Digital Capabilities Model	
Talent Shortages and Gaps	Enterprise Standards for Sustainability	
	Enterprise Certification Registration Preparation	
	SCORMark Benchmarking	
	Global Health Maturity Model	
	Resilient Supply Chain Benchmark	

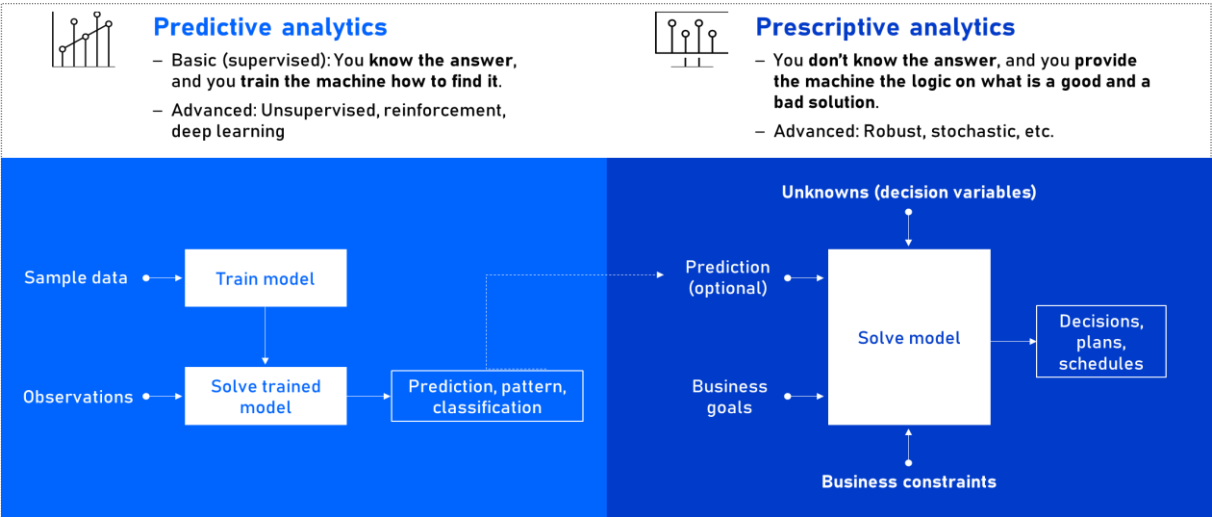
Learning & Development		
Learning & Development	Certificate Programs	ASCM Blog
Learning Opportunities	Technology	Editorial Guidelines
Supply Chain Learning Link	Planning	ReBounce Podcast
Foundations of Supply Chain Management	Warehousing	ASCM Supply Chain Dictionary
	Procurement	Instructor Development Program
Certifications & Credentials	Events	Program Resources
CTSC	Webinars	COVID-19 Impact
CPIM	Supply Chain Tour	
CSCP	ASCM CONNECT 2023: Europe	
CLTD	ASCM CONNECT 2023: North America	
SCOR-P		
Credential Verification	APICS Training Partners	
Certification Maintenance		
What Product is Right for Me?		

ORTEC



- World's # 1 APS Provider
- 1,000,000+ people planned daily
- 400,000+ trucks planned daily
- Edelman Award winner in 2012
- Scalable, Innovative, Award-winning
- 65 mln kg CO₂ yearly customer savings
- 2000+ customers from 60+ countries



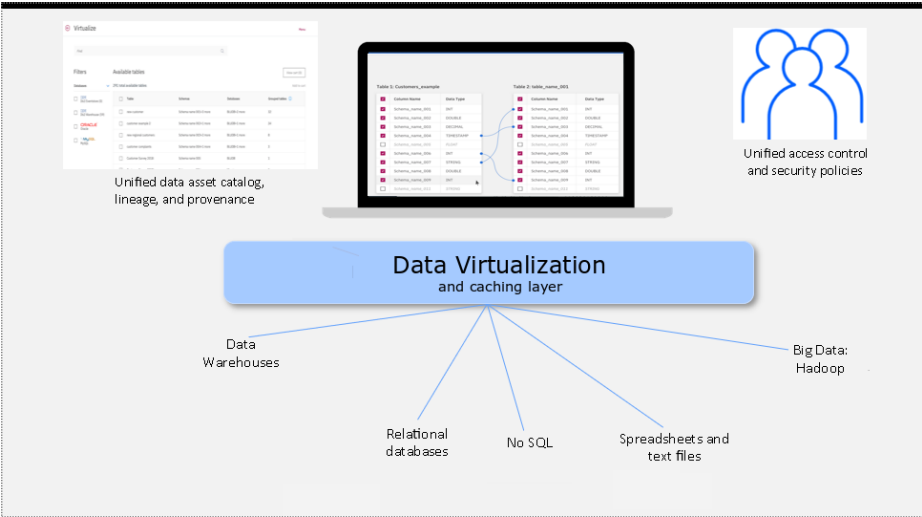


IBM WATSON STUDIO: Multimodal Predictive Analytics and Machine Learning Solutions

IBM WATSON KNOWLEDGE CATALOG: Machine Learning Data Catalogs

IBM CLOUD PAK. FOR DATA: Enterprise Insight Platforms

IBM WATSON DISCOVERY: Cognitive Search



My projects > Marketing Campaign Project > Term deposit subscription

Experiment summary

Rank based on: ROC AUC Score: Training Holdout

Relationship map

Pipeline leaderboard

Rank	Name	Algorithm	ROC AUC (Optimized)	Enhancements	Build time
1	Pipeline 8	LGBM	0.897	HPO-1 FE HPO-2	00:08:00
2	Pipeline 3	Gradient boosting	0.896	HPO-1 FE	00:02:19

IBM Watson OpenScale

credit-risk-modeling

Drift: The drift monitor estimates the drop in accuracy of the model and the drop in data consistency based on the training data.

Drop in accuracy: -20% (10% below threshold)

Drop in data consistency: -10%

Supporting metrics: Base accuracy: 80%, Estimated accuracy: 64%



The #1 Customer-Driven Digital Supply Chain Platform

Blue Yonder Quick Facts


3,000+
Global Customers


5,500+
Professionals


\$1B
Annual Revenues (2020)


95%
Customer Retention Rate


430
Patents granted and pending


73
Of the top 100
Retailers use Blue Yonder¹


17
Customers in the "Gartner Supply
Chain Top 25 for 2020"²


25%
EBITDA and Strong
Cash Reserves (2019)

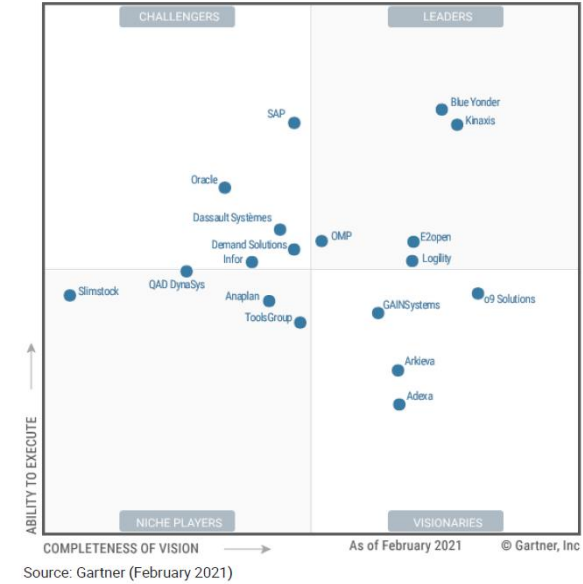

134
New customers per year

Gartner®
3 for 3
A Leader in three Gartner
Magic Quadrant Reports³

Strength in Manufacturing



Copyright © 2021 Blue Yonder Group, Inc. Source: 2020 Fortune 500



AGENDA

SELCO

REFERENCES

TESTIMONIALS



Hakan GÖRAL

Vice President, Agri Industry at Tekfen Holding

"In the new world of volatile supply chains and increased competitiveness, we have to become an analytical company to make the correct decisions faster and more correctly. The optimization solution we have implemented with SELCO has not only enabled the digitalization of our company's planning processes, but also revealed the hidden opportunities in the supply chain by ensuring the correct use of information and enabled us to efficiently manage our business dynamics in our supply chain. Well beyond enabling the digitization of our company's planning processes, this model not only helps our decision-making process but also allows us to view operations in a wider perspective, enabling us to quickly analyze different business strategies and meet dynamic customer demands with optimum business profitability."

TEKFEN HOLDİNG

Vice President, AGRI INDUSTRY



Kutsi DÖNMEZ

Cluster Supply Chain Manager, BP

"We are collaborating with SELCO for over 20 years. With the expertise and technical support, we have succeeded in strengthening the operational model of the BP - Castrol Lubricants supply chain. In our 'strategy setting' study, SELCO guided us to design the most suitable supply chain model for the needs of our business in the coming years and to make the most optimal use of our current assets. Another project was 'tank field optimization', which helped us to integrate our new raw materials to the new product development cycle with the lowest possible investment budget. In order to increase our regional competitiveness, we analyze our strategic growth scenarios together with the SELCO team and mature our strategic investment plans. We have drawn the most accurate roadmap for our business, thanks to the disciplined and perfectionist project management capabilities of the SELCO consultant team. They also provide annual trainings to our internal resources to stay updated to the changing supply chain world."

GENERAL ELECTRICS

Plant Director at LM Wind Power



Selim ERGÜN

Building Materials Group Vice President, Operations, KALE SERAMİK

"Kale Group has any leading brands; we know very well that the strength of these deep-rooted brands is to provide our customers with high quality service continuously and that the service provided can only be achieved with a good supply chain structure. Through our work with SELCO, we have redesigned the competitive supply chain building blocks that can deliver higher quality and reliable customer service. SELCO's most important contribution to us is their support in establishing a structure that continuously improves and develops itself operationally, by enabling us to implement the best business practices in the world with an operational excellence perspective."

SISAL ŞANS

CEO



Sertaç Hamza
Supply Chain Leader, McDonald's

"We needed to validate our current business model for and after the pandemic period; we decided to work with SELCO because of their industry experience. SELCO analyzed our supply chain, identified improvement points, and evaluated potential 3rd party collaborations and guided us to have a more efficient supply chain. Thanks to this study, we can now see our supply chain management strategy more clearly for the next few years."

[Mc Donald's](#)
Supply Chain Leader



Emre ÜNAL
COO / Executive Board Member, ARZUM

"We worked with SELCO for the design and integration of S&OP processes. They correctly understood our strategic needs, spoke the same language from the first day and conveyed their expertise. They not only integrated the S&OP processes into business analytics applications, but also worked with us during the initial cycles to during the transformation period, helping us to successfully implement the theory into field operations. One of the most important added values we received was the fact that SELCO engaged with every function correctly with the proper communication style, focused on the goals of the business units, and gathered us around our common values."

[ARZUM A.Ş.](#)
VP Operations / Executive Board Member



Alper REİSOĞLU
Supply Chain Manager, DAIKIN

"To ensure that we have the right business design that will take into account all technological and practical developments in the sector, we chose to work with SELCO. Although they were given a very short time to analyze our data and prepare RFQ documents for the tender, they quickly translated our business dynamics, completed the sensitivity analysis very quickly, and delivered the desired outputs in a very short time. During the 3PL selection process, they guided us with the right information at every step we needed. They provided great support with their work that inspired a great change in our logistics organization, especially with the work done on network design and the interpretation of alternative warehouse needs as a result. We have enjoyed working with the SELCO team, who added strategic value to our company through a very disciplined work."

[DAIKIN A.Ş.](#)
Procurement Manager



Mehmet YILMAZ

Director Operations and Projects, TÜRK HENKEL

"Playing a very important role in the design of our new facility, SELCO guided us in the correct design of the logistics and production infrastructure of our new production facility. We would like to thank the SELCO team, who worked in harmony not only with our operation team, but also with all the teams involved in the facility project, relieved us with their constructive engineering contributions in the design difficulties we experienced, and guided us in having a world-class facility."

[TÜRK HENKEL A.Ş.](#)

Director Operations and Projects



Murat HEPDURLUK

Supply Chain Director, BRİSA

"BRİSA is one of the leading companies in use of digital technologies and Industry 4.0 applications; we are constantly improving our supply chain with new generation technologies. While increasing efficiency and profitability, we take care to simplify business processes and create value. With our advanced data analysis project with SELCO, one of our critical partners, we achieved a holistic optimization in terms of improving logistics processes, saving us 10 % in our logistics operation costs. In the future, we will develop this work, using artificial intelligence and simulation technologies and reach an environment where we will optimize our logistics operations in real time."

[BRİSA](#)

Vice Chief Technology Officer



Kerem Üçok

CEO, LOGITURC Real Estate Solutions

"Combining our experience in the real estate sector with actual needs of Turkish industry, we chose the logistics sector as the industry branch where the lack of modern infrastructure affected the sector players the most. To raise our standards to world class levels, we have chosen SELCO experts for our first logistics park project of 300 acres in Tuzla, where we served the logistics industry with a very high quality infrastructure. SELCO provided engineering and consultancy services by making valuable contributions to our teams both in reflecting customer needs to projects and in creating detailed projects. "

[LOGITURC](#)

CEO, Board member

TESTIMONIALS



Tuğçe Ersöz

Project Manager, MEDIAMARKT Turkey

"We worked with SELCO to design our new logistics operations model, allowing us to have a more agile and competitive supply chain. We were able to compare the costs of different distribution model scenarios and their impact on customer service levels; we can deliver more reliably and provide higher customer service."

MEDIAMARKT NL

Demand Planning and Replenishment Manager



BURÇİN ÇELİK

Lojistik Direktörü, CARREFOURSA

"SELCO, yapmış olduğu çalışma lojistik yapımızın doğruluğunu derecelendirdi, gelecek planlarımıza uygun stratejik lojistik yapımızı tasarımı ve müşteri hizmetini en üst düzeye çıkararak operasyonel iyileştirme alanlarımızı belirledi. İleride yeni iş modellerimiz ile ilgili yapacağımız projelerimizde de SELCO ile çalışmayı arzuluyoruz."

SELCO evaluated our logistics operations and designed a new strategic distribution network in line with our future plans; they also identified our operational improvement areas, thus improving our customer service levels. We would like to work with SELCO in future projects, regarding supply chain and logistics transformation projects.

CARREFOURSA

Executive Committee Member / Deputy General Manager at CarrefourSA

Supply Chain Framework Design

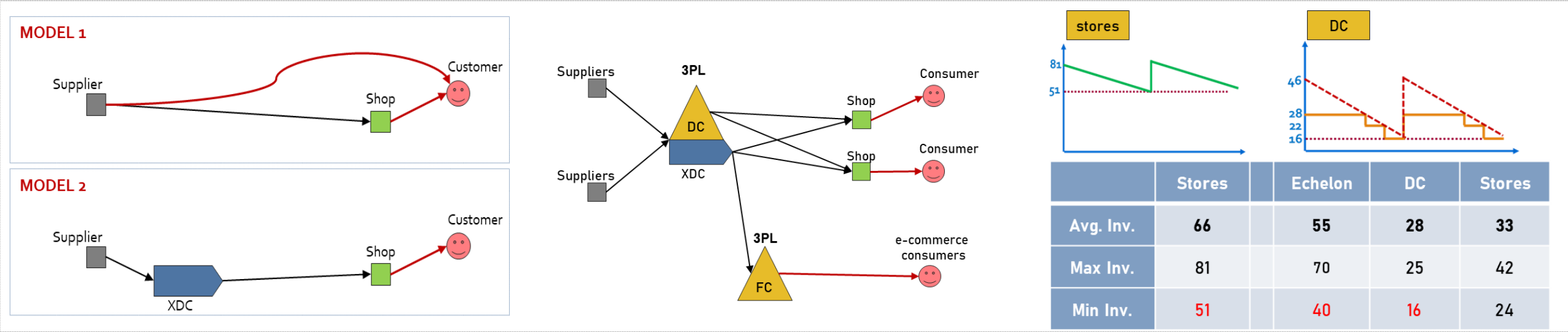


Project Scope

- ▶ End-to-end supply chain framework design
- ▶ Transformation from
 - a direct shipment distribution system
 - with frequent demand – FC conflicts
 - with high intra-store transfer logistics
- ▶ To
 - echelon inventory planning with a pre-allocated crossdock distribution model
 - enabling omnichannel logistics
 - and improved last mile delivery

Project Deliverables & Values

- ▶ Improvement of all key metrics
 - 10 % increase on shelf availability
 - 12 % inventory reduction
 - 40 reduction in intra-store transfer logistics
- ▶ Process changes
 - Assortment planning
 - procurement
 - Forecasting, inventory positioning
 - inventory replenishment & home delivery

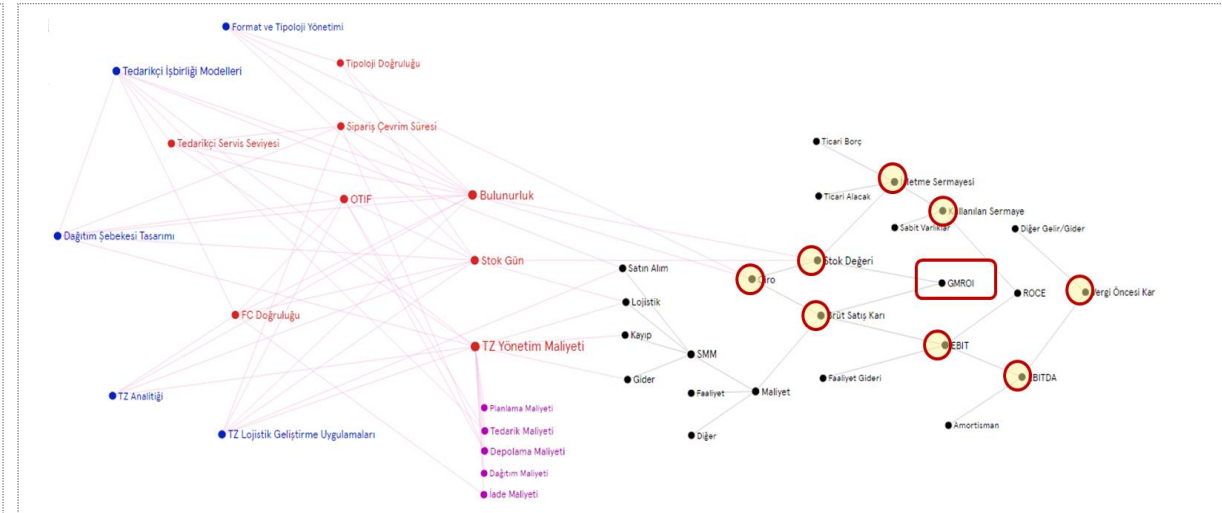
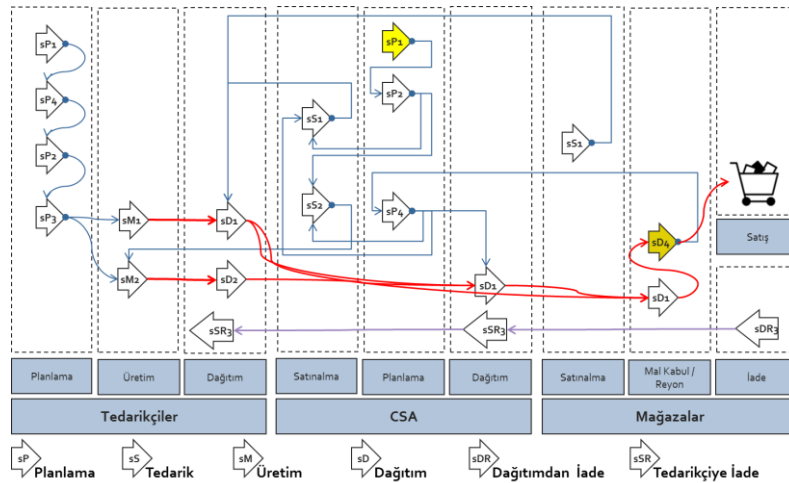


Project Scope

- ▶ Identifying Supply Chain Management disconnects
- ▶ Defining quick-win and strategic roadmaps for
 - Logistics business model
 - Processes
 - Performance management
 - Advanced planning

Project Deliverables & Values

- ▶ Improving business metrics
 - Shelf availability, inventory, logistics costs
 - GMROI
- ▶ Improving productivity
 - Real time SKU FC generation, automatic replenishment
 - Focusing on real issues through exception management
 - Increased collaboration with suppliers
 - End to end best logistic practices



Network Consolidation of ARCELİK & GRUNDIG

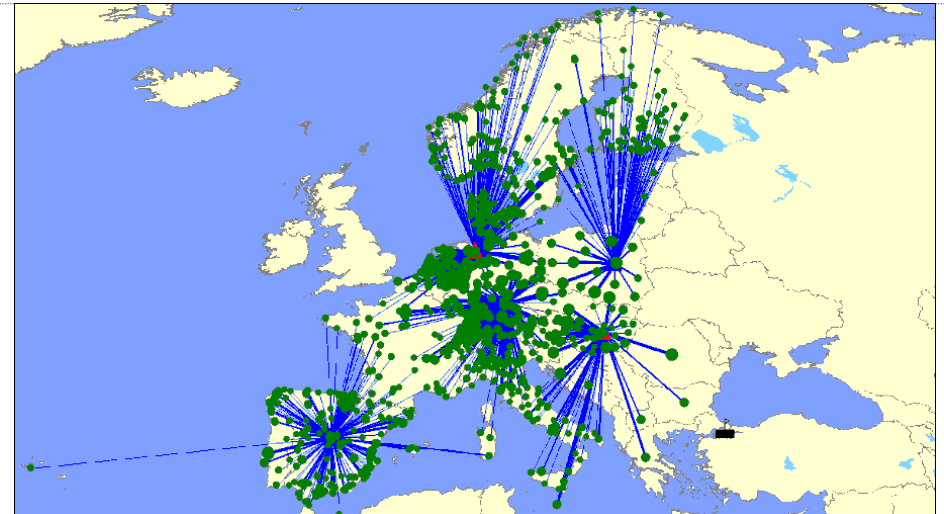
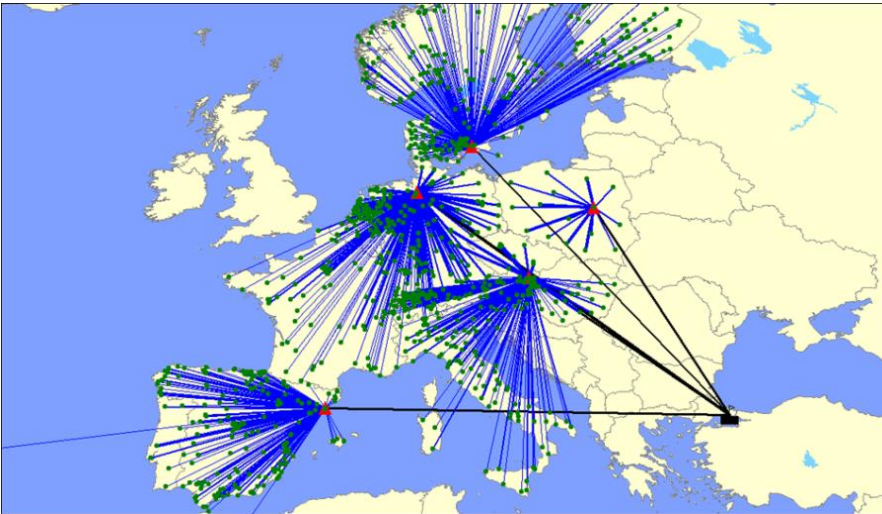


Project Scope

- ▶ Developing the optimized logistics distribution network for ARCELİK - GRUNDIG Integration in Europe
- ▶ Determining optimal locations of distribution centers, coverage of customer regions and transportation modes for the finished products
- ▶ Calculating the service area of the selected distribution centers

Project Deliverables & Values

- ▶ Consolidation of 20+ DC locations to 10 DC locations
- ▶ 6 % decrease in total logistics costs



Project Scope
<ul style="list-style-type: none">▶ Developing the optimized logistics distribution network for BSH Turkey▶ Network design work that provides customer service level targets and minimizes total logistics costs in Turkey distribution operation<ul style="list-style-type: none">▪ Optimum number of distribution centers, their locations and sizes▪ Determination of distribution center locations where customers receive service▪ Evaluation of 5-year future projections

Project Deliverables & Values
<ul style="list-style-type: none">▶ optimum number of distribution centers and their locations▶ Determination of distribution centers coverage areas▶ Increase in customer service levels▶ Network designs to adapt to future growth scenarios



Pınar Otenkuş, Manager of BSH Logistics Operational Excellence Department, said “The study is of great importance for BSH Turkey SELCO has been one of our important stakeholders while designing our strategic logistics structure in line with the project goals and future plans of BSH Turkey.”



Sourcing & Distribution Network Design



Project Scope

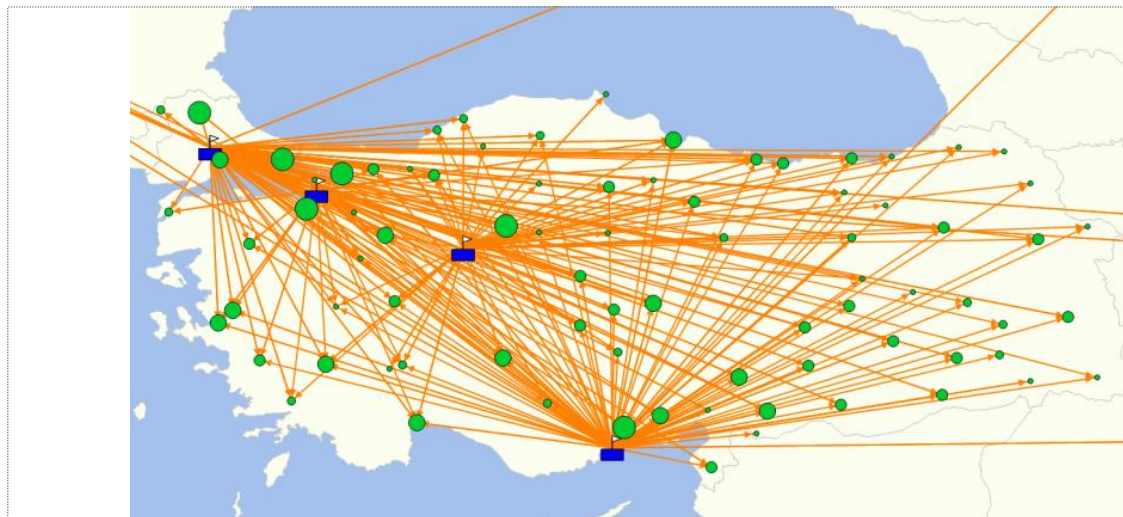
- ▶ determine the optimum location for SISECAM FLATGLASS's new production line
- ▶ allocation of products to production lines, such that total cost of procurement, production, warehousing, and distribution is minimized while satisfying customer service levels
- ▶ optimum decisions
 - Supplier sourcing – factory matching
 - Product groups – factory allocation
 - Customer orders – factory line matching
 - Export orders– port allocation

Project Deliverables & Values

- ▶ Product portfolio definition by production lines
- ▶ Optimal supplier selection for factory-material mix
- ▶ Optimal supply location and distribution mode for customer orders
- ▶ Optimal production lines and port allocation for export orders
- ▶ Reduction of total supply chain costs

Tactical decisions

- ▶ Planning revisions for volume changes or unexpected business changes
 - Update of demand plans
 - Supplier constraints
 - New sourcing options
 - Shutdown periods
 - Port changes
 - New transportation modes/lines

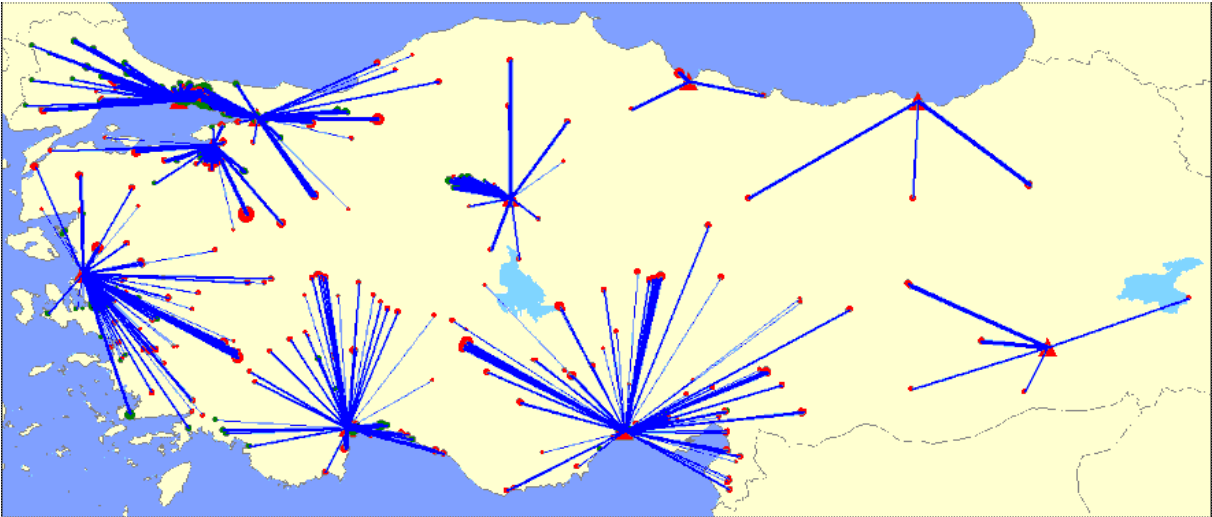


Fuel Distribution Network



Project Scope
<ul style="list-style-type: none">▶ Fuel Distribution Network▶ Distribution network connecting 10 terminals to 600+ fuel stations▶ Minimization of transportation costs<ul style="list-style-type: none">▪ Identification of stations to be served by BP fleet▪ Identification of stations to be served by own fleet▶ BP distribution fleet sizing

Project Deliverables & Values
<ul style="list-style-type: none">▪ Optimum fleet size▪ Optimum service model for stations▪ Logistics cost modeling for existing & prospect stations



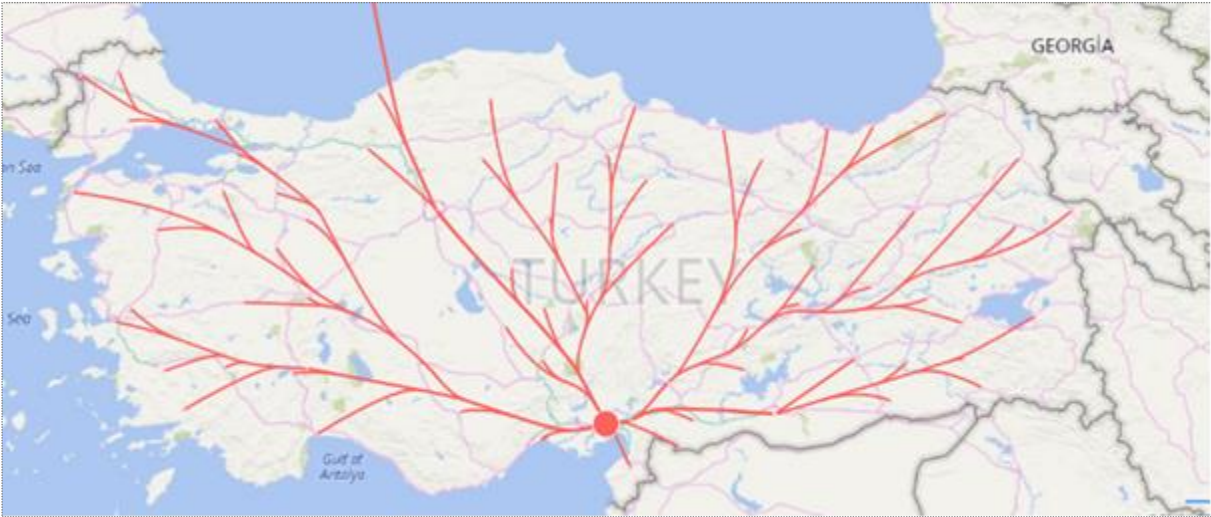
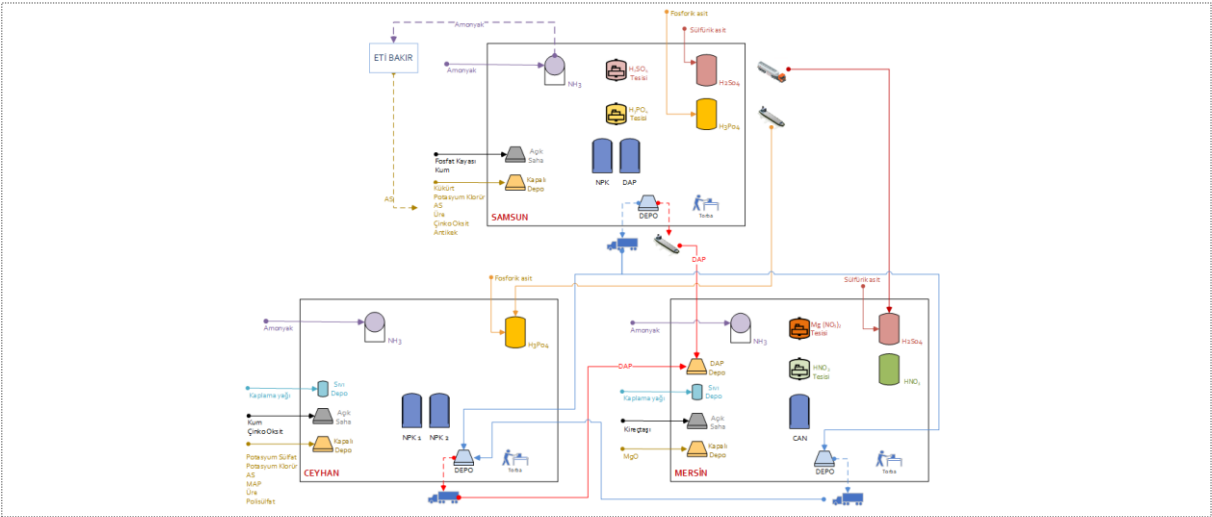


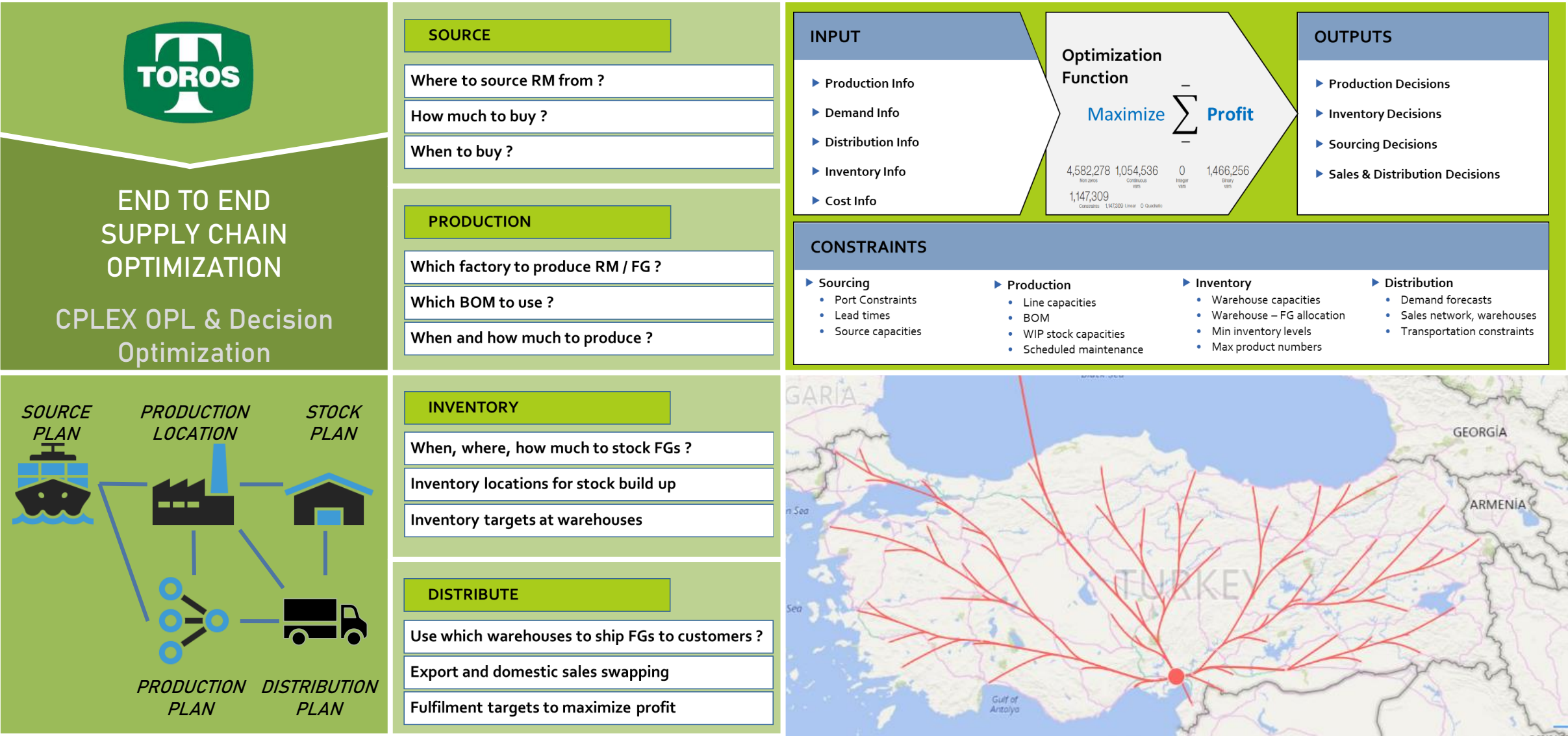
Project Scope

- ▶ An end-to-end supply chain optimization solution for a global for fertilizer producer with 3 plants, which
 - maximizes gross margin
 - subject to business rules and constraints for sourcing, manufacturing, warehousing, and distribution
 - with extreme bill-of-material complexities / opportunities due to sourcing / producing decisions for raw materials, of which the costs fluctuate in global markets
- ▶ Running on
 - IBM ILOG CPLEX Optimization Studio

Project Deliverables & Values

- ▶ An optimization tool finds the optimum decision set for
 - Balancing the production capacities and inter/intra sourcing options
 - Sourcing raw materials at the right price, quantity, route
 - Producing/procuring semi finished products at the right quantity
 - Producing finished goods with the most cost effective BOM
 - Producing to demand/stock for optimum capacity leveling
 - Pre-stocking to distributed storage capacities to optimize the distribution network costs
 - Fulfilling the demand from the most cost effective source/storage locations





Project Scope

► Business challenge

- The variation of the chemical and the physical properties in newly mined raw materials compel the planners to frequently change the blending recipes.

► Objective

- to discover the unique recipe of raw materials that provide the optimum cost,
- while chemical and physical properties conform with the quality targets of the end product.

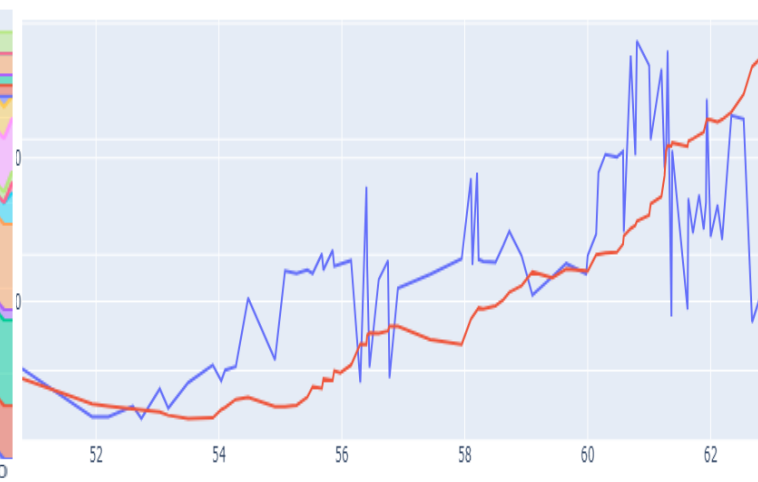
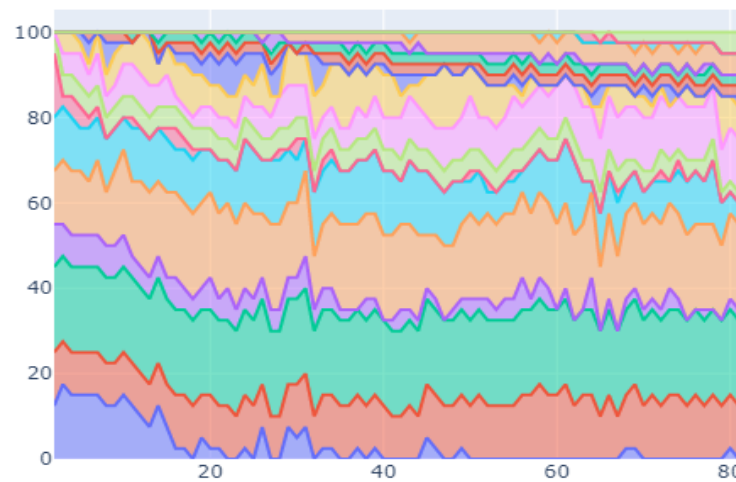
Project Deliverables & Values

► Solution

- a sophisticated solution developed on IBM ILOG CPLEX optimization
- to provide insight to creating optimum blending recipes, in 90 seconds or less

► Results

- process cycle for creating blending recipes, reduced from days to minutes
- opportunity to view optimum material costs and product quality reflections.
- 14 % reduction on material cost
- 10 % reduction on electric consumption
- 10 % increase in production capacity
- capability to create recipes of new products, once deemed “impossible”

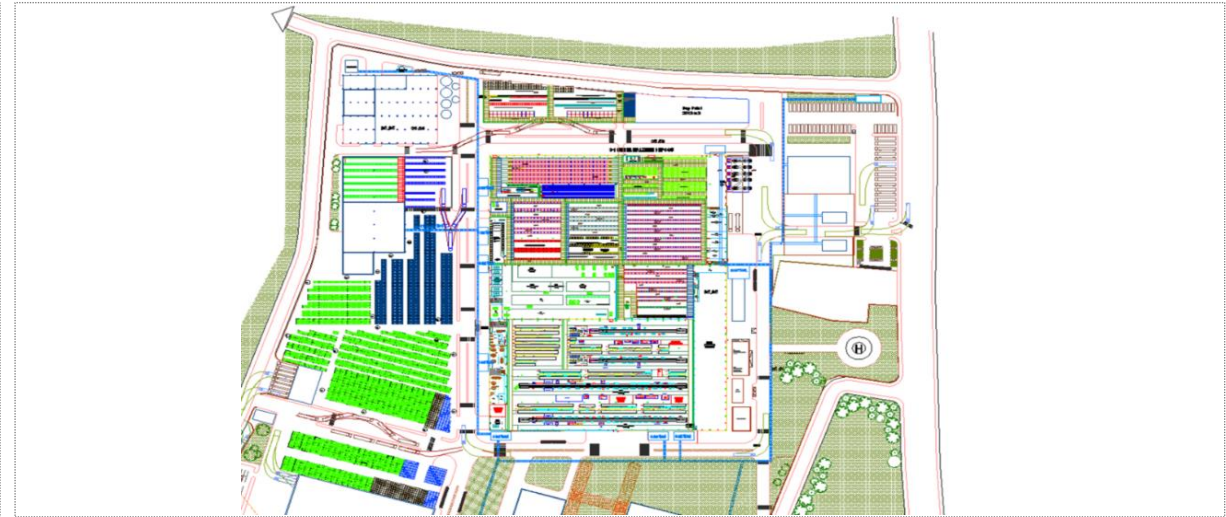
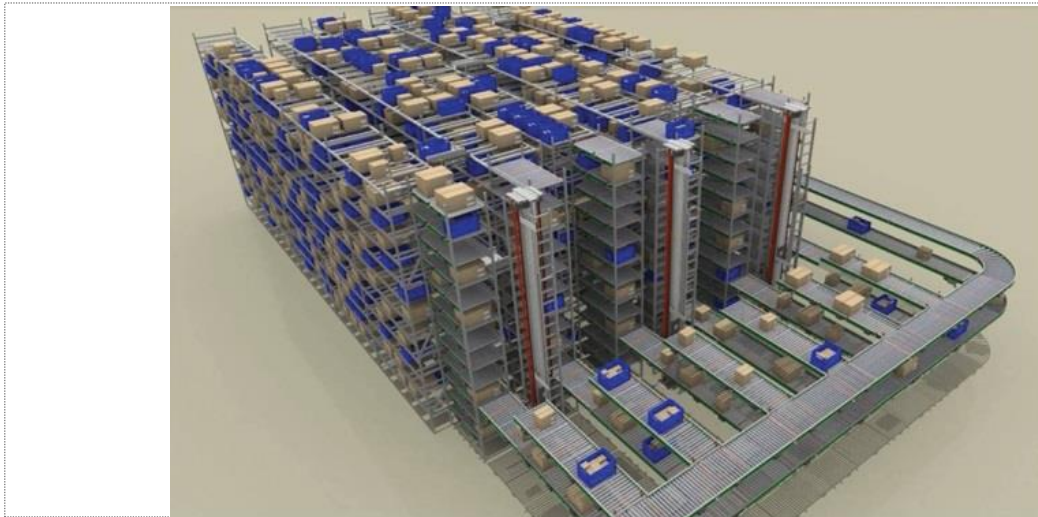
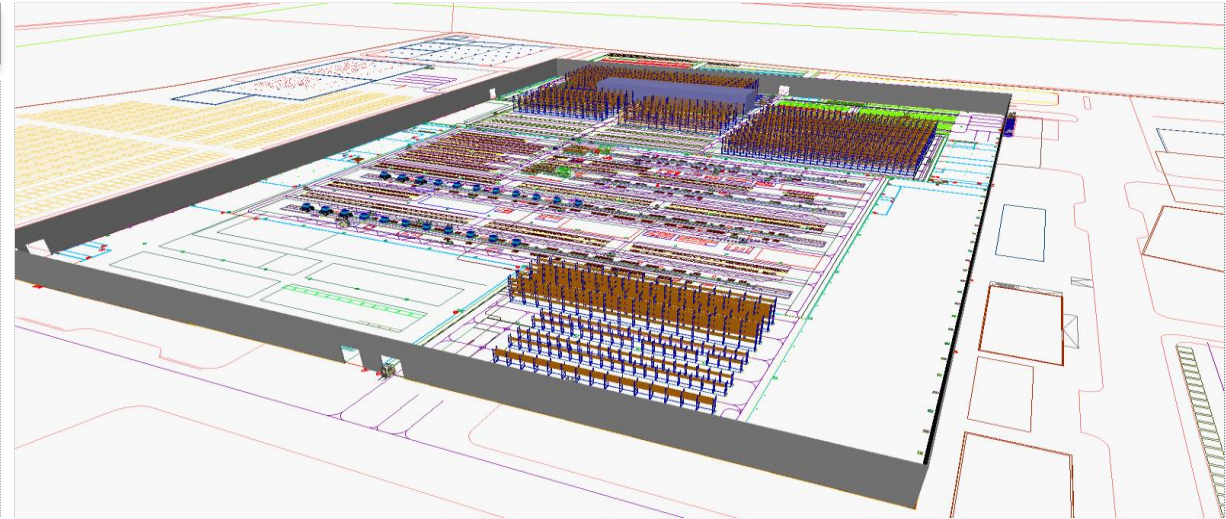


ERENLER Manufacturing Plant

Project Scope

- ▶ Design of a new assembly plant for Turkey's largest tractor manufacturer
- ▶ Optimum layout of operations, storage facilities
- ▶ Optimum design of material flow
- ▶ Vendor selection for all material handling & storage related investments
- ▶ 100 % conversion, from design to operation

TürkTraktör

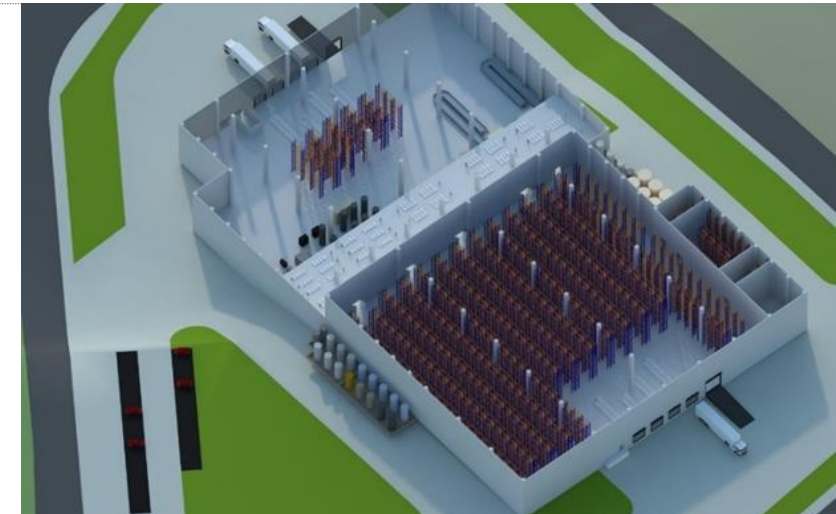
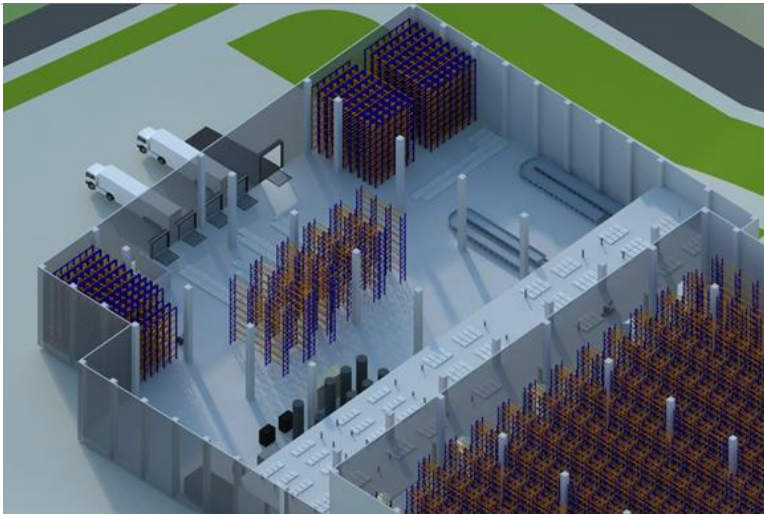


Dilovası Facility Design



Project Scope

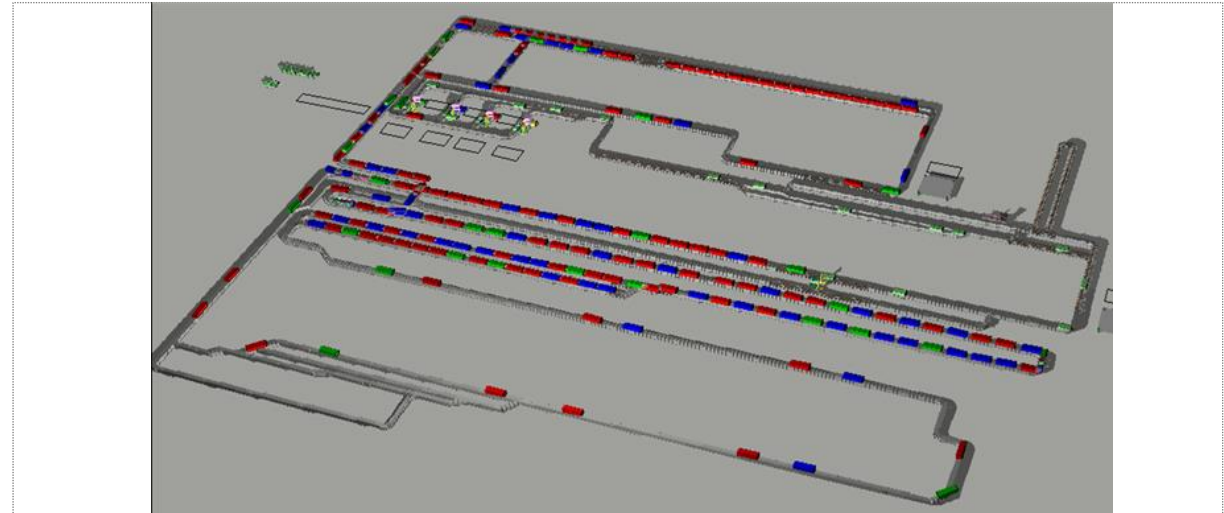
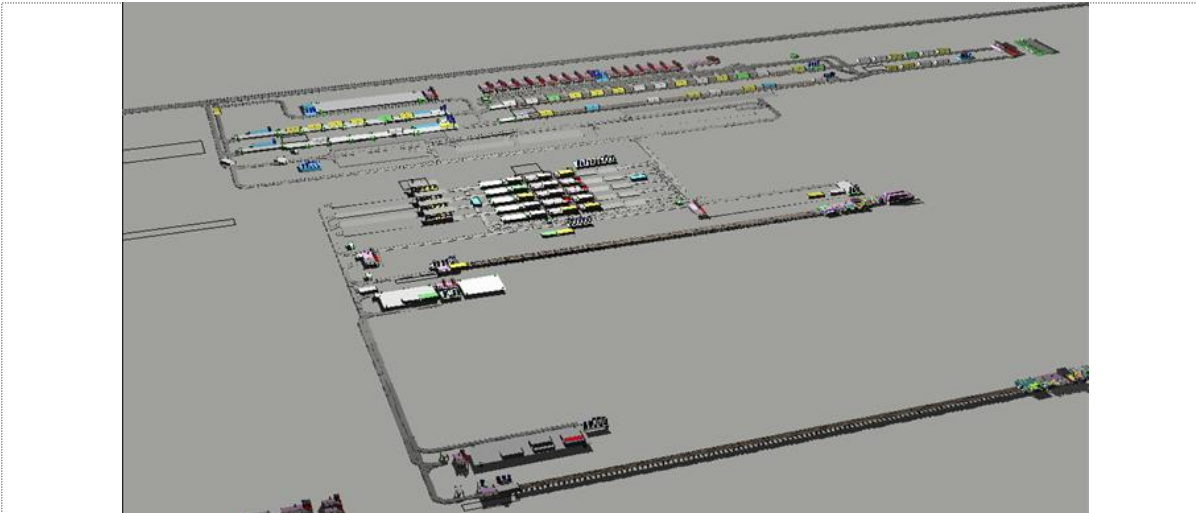
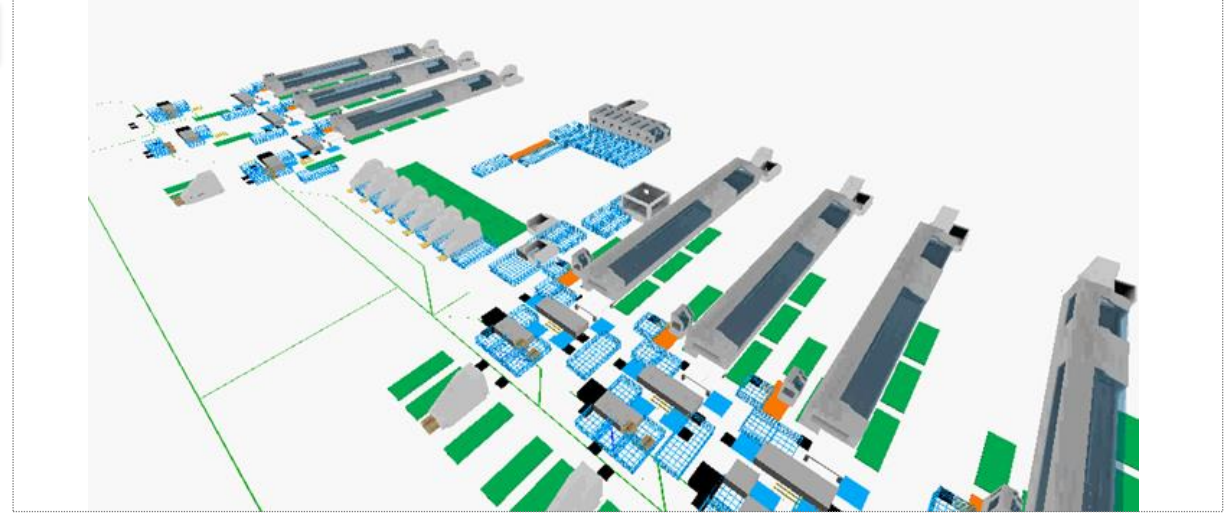
- ▶ Facility layout planning and material handling system design for the adhesive technologies factory
- ▶ Design to minimize carbon dioxide footprint with sustainability awareness
- ▶ Optimum plant layout, operation and equipment designs following material and work flow analysis
- ▶ Support for logistics equipment purchases
- ▶ Logistics equipment commissioning





Project Scope

- ▶ Simulation-based feasibility study on the investment plans of TOFAŞ with regards to plans of upsizing capacity
 - Conveyor system linking Re-Spotting line and Assembly line
 - Testing processes after Assembly lines
 - Enhancement of body mounting processes
 - Bottlenecks to be experienced in paint shop as a result of greater capacity
 - Material flow simulation between Stamping – Body lines



EMS Material Handling System Design

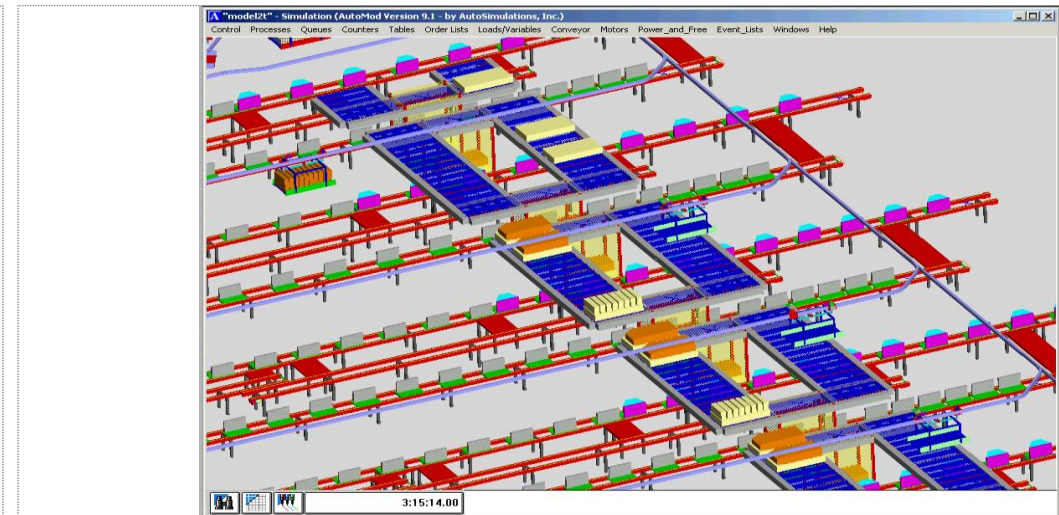
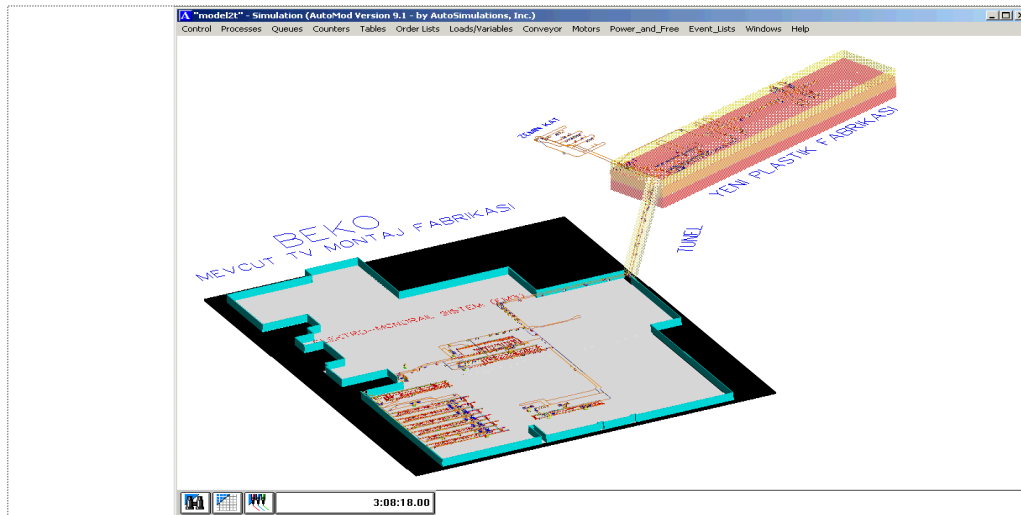


Project Scope

- ▶ Automated material flow system between BEKO production and assembly plants
- ▶ € 6+ M EMS & automation investment
- ▶ Simulation-based feasibility study on investments
- ▶ Realisation of EMS material handling system design
- ▶ Design of automation system

Project Deliverables & Values

- ▶ Optimal layout design was generated for the selected Electro-monorail material handling system using simulation
- ▶ Potential bottlenecks and system specifications were determined
- ▶ Verification of engineering changes
- ▶ Seamless go-live of a highly complex material handling system



Automated DC for Fabric Rolls

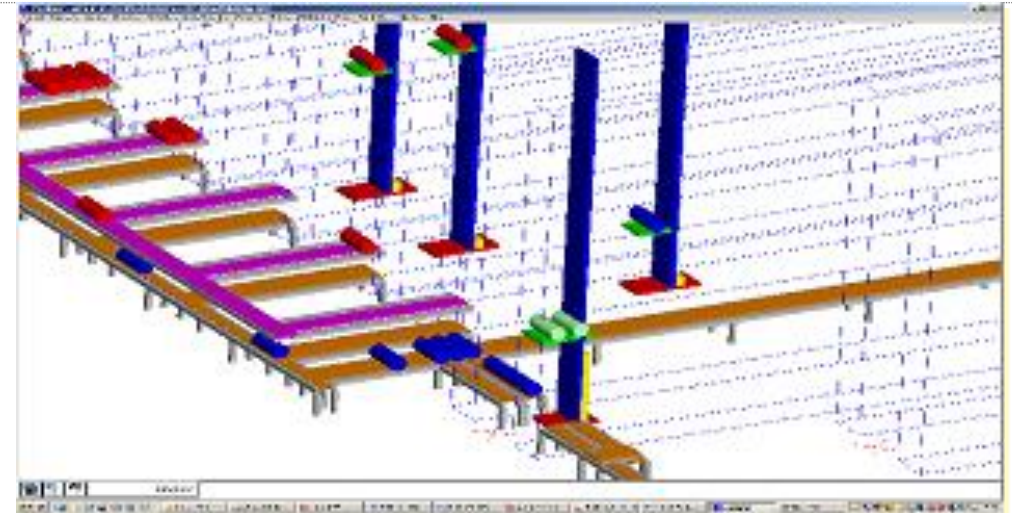
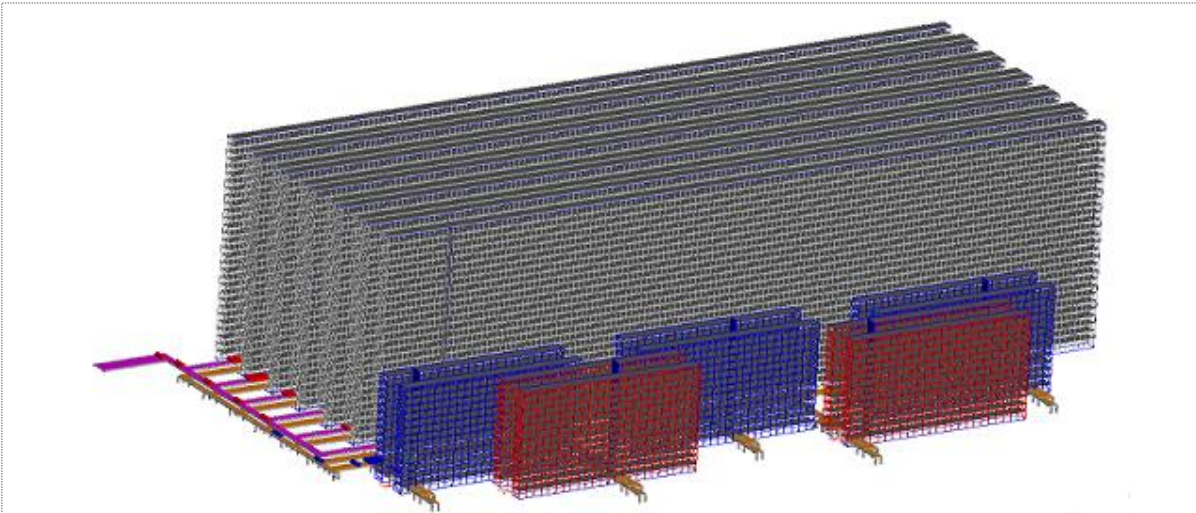


Project Scope

- ▶ Feasibility study for automated DC expansion
- ▶ A complex simulation model built to analyze all materials handling & storage automation
- ▶ Determination of bottlenecks

Project Deliverables & Values

- ▶ Optimal layout design and system specifications were established
- ▶ € 4 million savings on actual investment



HENKEL Ankara Automated DC

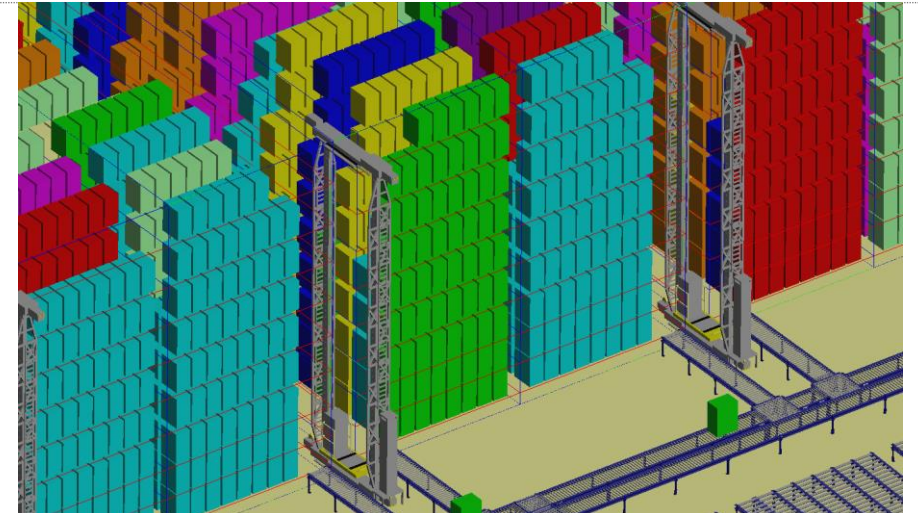
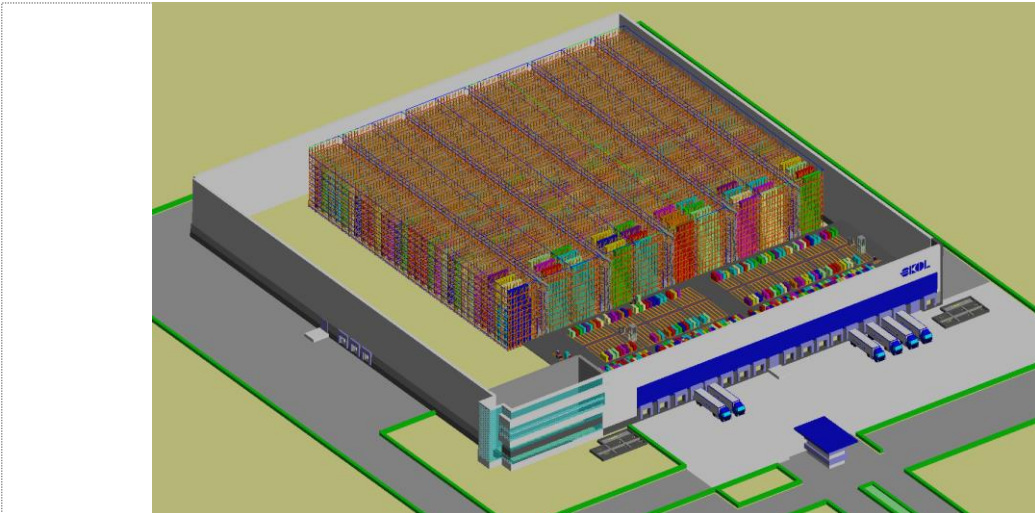


Project Scope

- ▶ Design of an automated DC for HENKEL
- ▶ Generic simulation model
- ▶ Layout and hardware design
- ▶ Scenario analysis
- ▶ Advanced animation features

Project Deliverables & Values

- ▶ A generic simulation model helping to identify bottlenecks due to business volume changes
- ▶ Testing of process improvement scenarios

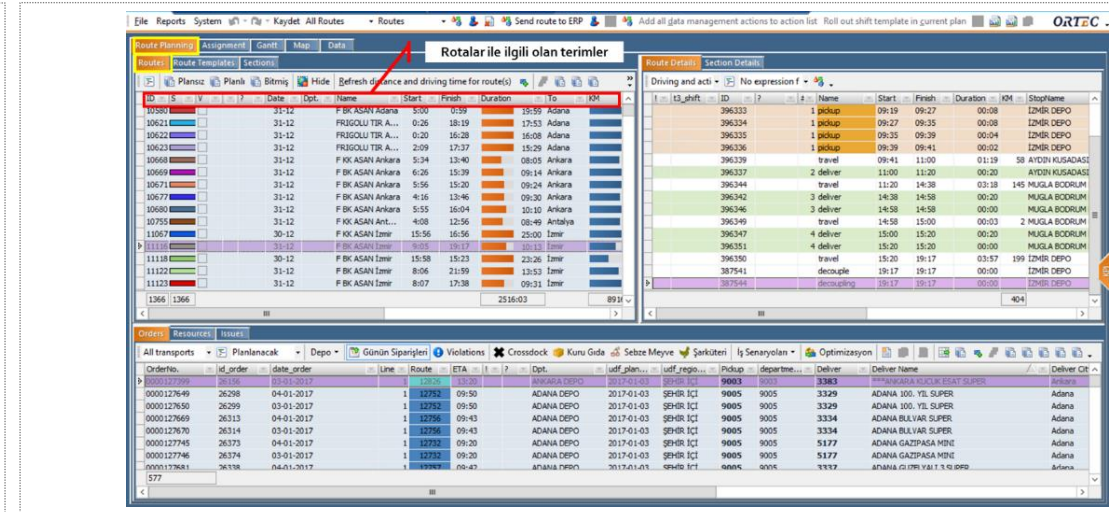
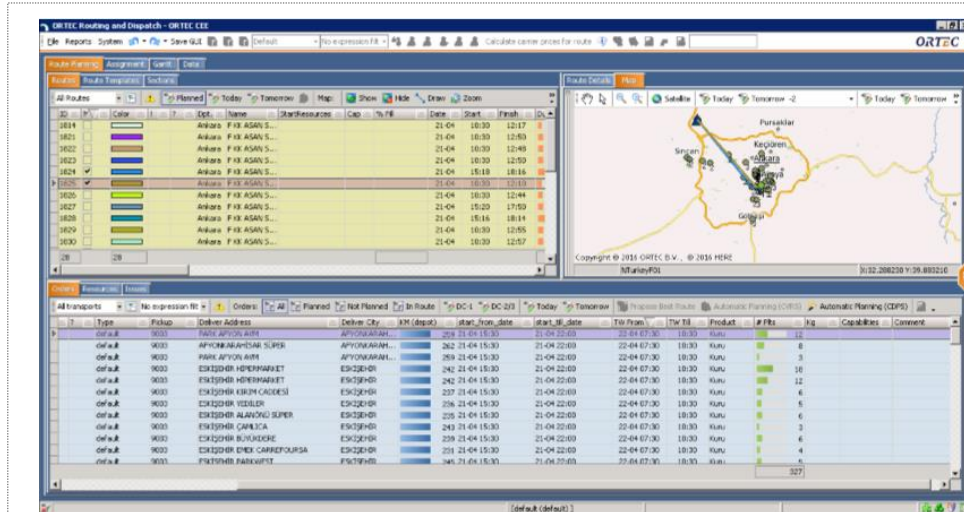


Project Scope

- ▶ Transportation cockpit
- ▶ Automatic Route Planning System
- ▶ 8 DCs, 350 trucks
- ▶ Multi stop store shipment
- ▶ Backhauling & returns

Project Deliverables & Values

- ▶ Go-live in 6 months
- ▶ Allocation of planner's time to value added planning
- ▶ 5 -10 % reduction in logistics costs
- ▶ Increase transport efficiency by optimizing routing and delivery time
- ▶ Improve Track & Trace accuracy
- ▶ Combine batch planning optimization with real-time execution and dispatch.



Project Scope

- ▶ 300.000 m² land
- ▶ 130.000 m² closed area
- ▶ Zone / DC design
- ▶ Implementation consultancy for the most prestigious logistics zone in Turkey



UL PARS DC Design

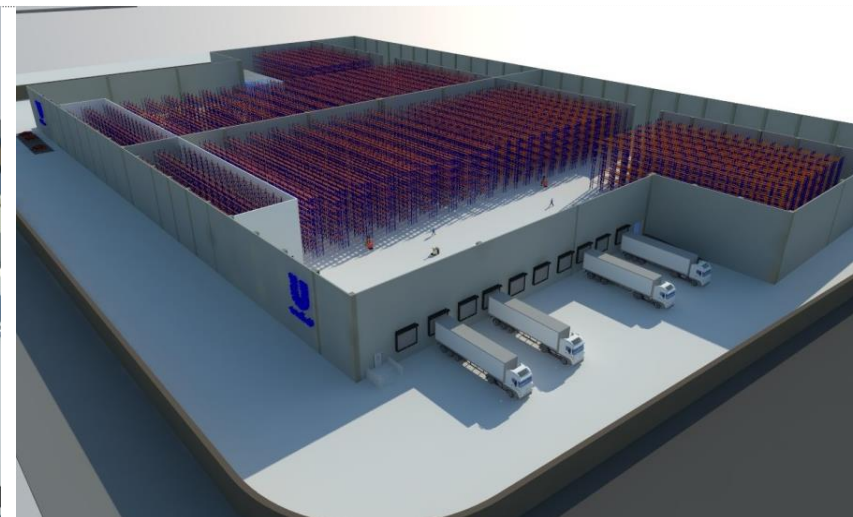
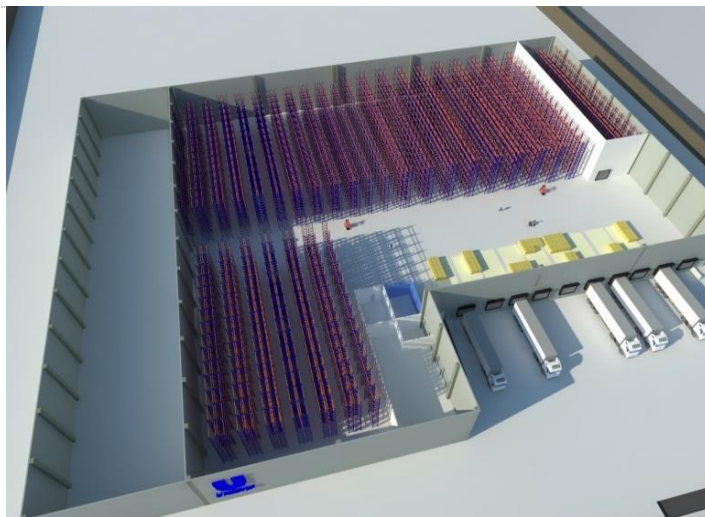
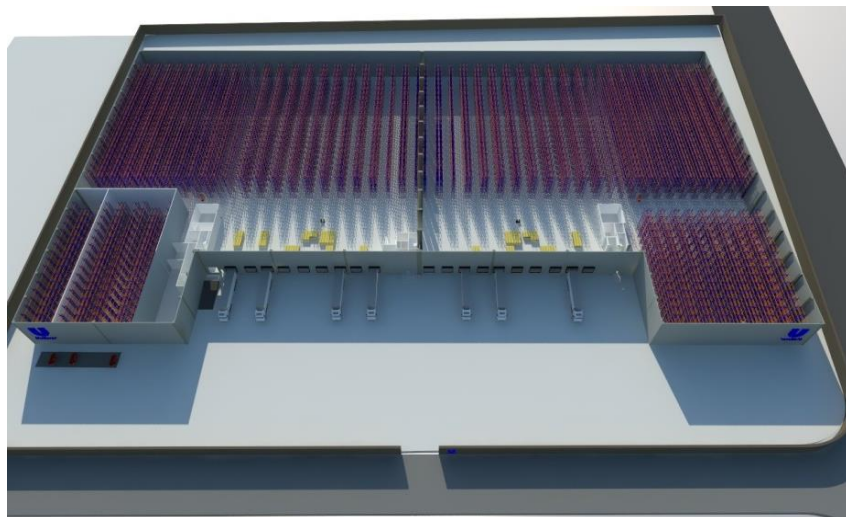


Project Scope

- ▶ A new DC is to be built in IRAN (35,000 m²)
- ▶ Design consultancy from greenfield
- ▶ Flammable, aerosol, chemical, frozen warehouses
- ▶ Phased expansions

Project Deliverables & Values

- ▶ Conceptual design, business and feasibility analysis
- ▶ FMCG operations
- ▶ Maximum efficiency for volume mix variations
- ▶ Optimum volume efficiency
- ▶ Layout supporting high operation responsiveness



Project Scope

- ▶ Retail and e.com operations
- ▶ Analysis of current logistics operations
- ▶ Conceptual and detailed design of the new warehouse (25,000 m²)
- ▶ RFQ preparation and supplier evaluation
- ▶ WMS implementation design

Project Deliverables & Values

- ▶ Optimum design for home retail, textile retail, e-commerce operations
- ▶ Flexibility for volume, SKU mixes, operational requirements
- ▶ Maximum volume efficiency
- ▶ Supporting fast retail operations

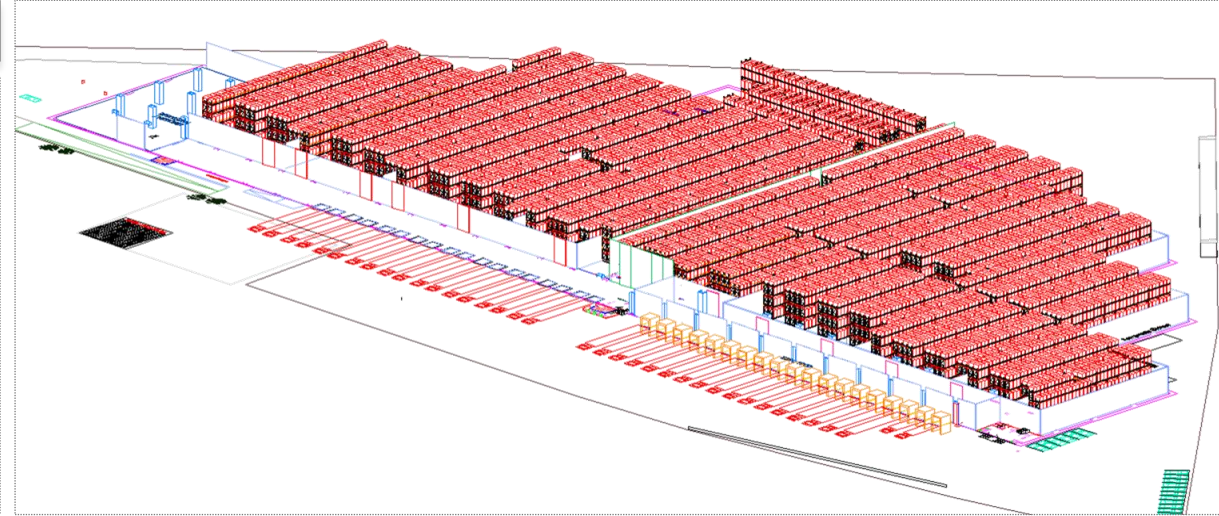


Food Logistics DC



Project Scope

- ▶ 40.000 m² warehouse and 20.000 m² cold & frozen storage
- ▶ Conceptual and detailed design of the new warehouse
- ▶ Monitoring of the design implementation of the project
- ▶ Racking equipment & cold warehouse vendor selection
- ▶ Warehouse resource requirement planning



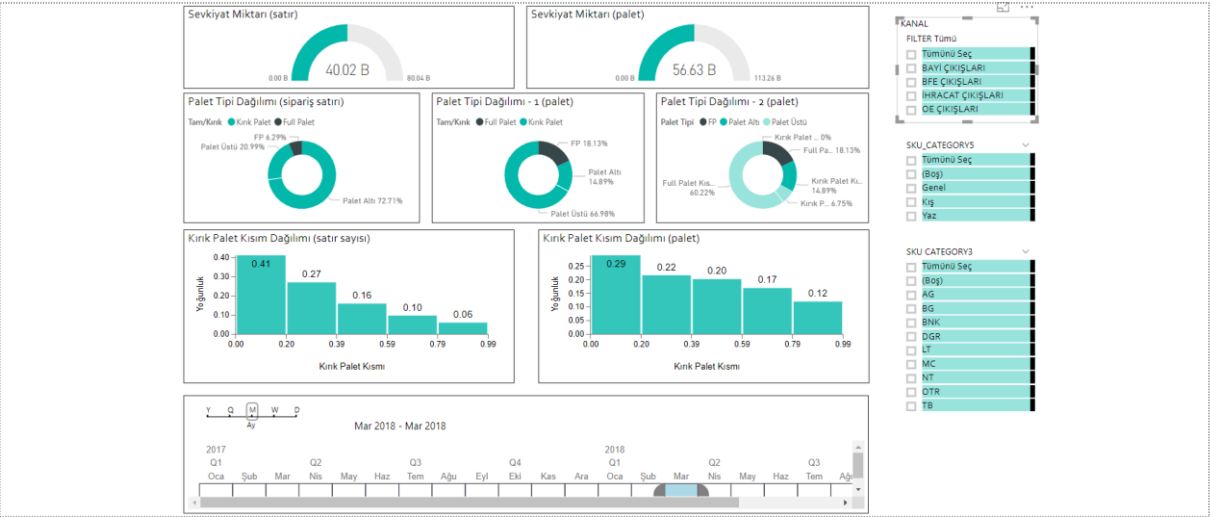


Project Scope

- ▶ Optimization of finished goods logistics operations with respect to ultimate aim of Operational Excellence
 - System analysis and improvements in warehouse
 - Visibility of performance and process mapping
 - Scenario management and simulation-based improvements
 - Artificial Intelligence based improvements
- ▶ Visibility of logistics operations
 - Process improvement areas
 - End-to-end activity-based performance management

Project Deliverables & Values

- ▶ Identification of process improvement areas
 - Improvement of operation efficiencies
 - 10 % cost reduction in warehousing operation costs
 - Development in WMS functionality
- ▶ End-to-end transparent logistics management
 - Activity-based performance metrics
 - Real time reporting templates
 - Data analytics



Distribution Center

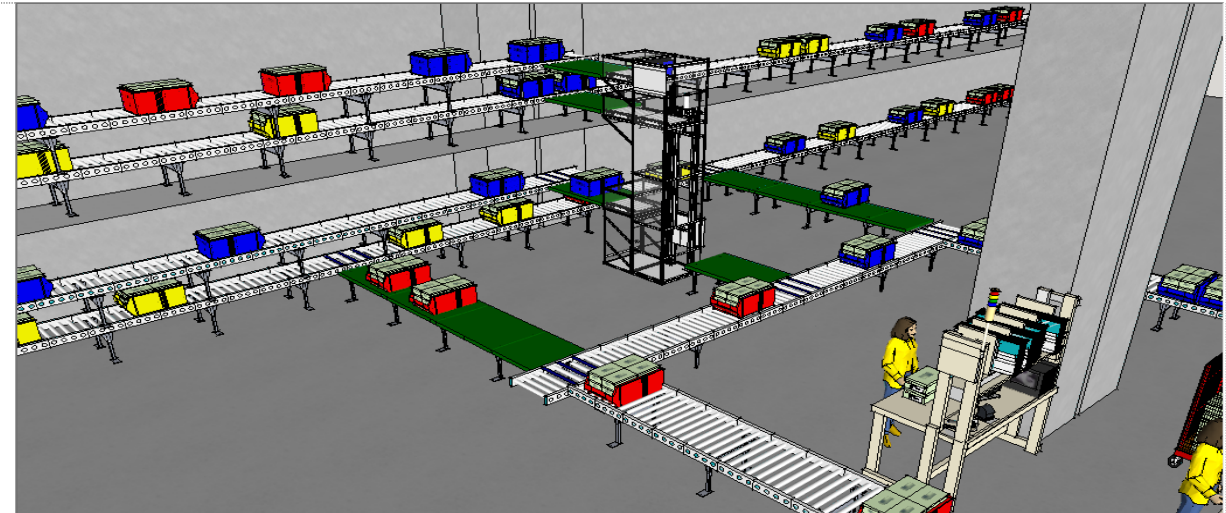
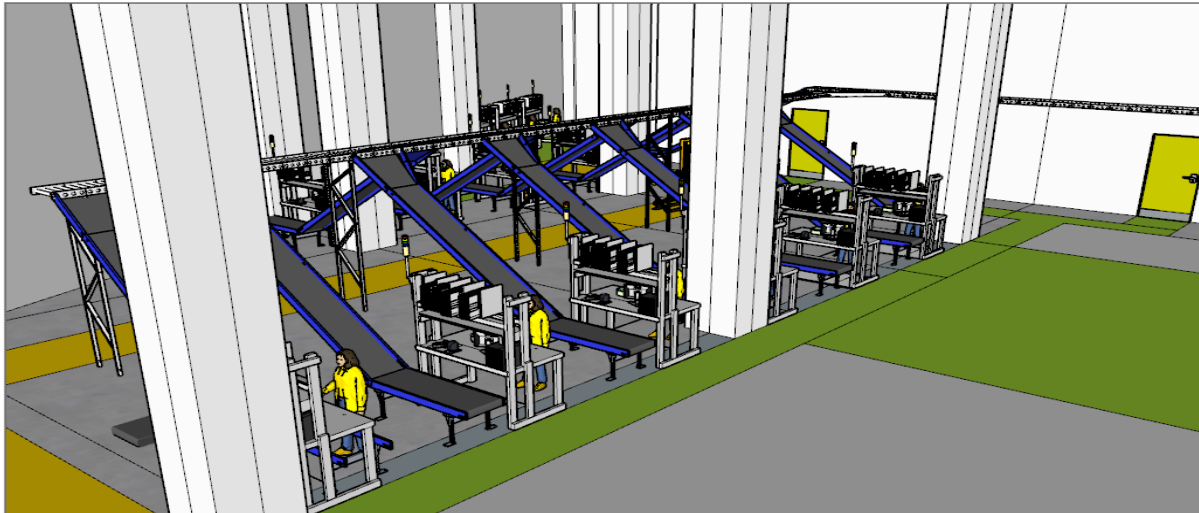


Project Scope

- ▶ 15.000 m² warehouse
- ▶ Conceptual and detailed design of the new warehouse
- ▶ Racking equipment & MHE vendor selection
- ▶ Warehouse resource requirement planning
- ▶ Warehouse capacity requirement planning

Project Deliverables & Values

- ▶ Efficient layout design for flexibility
- ▶ WMS process design and improvements
- ▶ Automation design for e.com operations
- ▶ Automation design for packing operations





Excellence is not a single act, but a habit

SELCO is a recognized consulting company with distinguished capabilities in supply chain and logistics management, delivering outstanding results and helping clients to use their resources more effectively by combining leading information technology and advanced analytics.

Our culture based on integrity and diligent effort, coupled with exceptional passion for delivering results enable us to retain and develop our customer base across all major industries and service sectors. Our partners around the globe with unique knowhow clusters accelerate and enhance the value of our services.

We provide consulting services in

- Supply Chain Consulting
- Business Analytics
- Software Consulting
- Material Handling Systems Design
- Warehouse & DC Design

We are a team, always proud to do the right by our clients, our partners, and our communities.

© 2023 SELCO CONSULTING – Private and Confidential Document